

## EXPLANATION OF THE PLATES.

*Talitriator eastwoodæ*, gen. et sp. nov.

All the figures have been drawn with the aid of a Camera lucida.

## PLATE X.

- Fig. 1. Antennule.  
 2. Antenna.  
 3. Upper lip.  
 4. Lower lip.  
 5. Maxillipeds.  
 6. Gnathopod 1.  
 7. Gnathopod 2.

## PLATE XI.

- Fig. 8. Pereiopod 3.  
 9. Branchial appendage of Pereiopod 4.  
 10. Pereiopod 5.  
 11. Pleopod 3.  
 12. Sketch of pleon, showing comparative size of appendages.  
 13. Dorsal aspect of posterior part of body.  
 14. Uropod 3.  
 15. Telson.

9. The Genus *Engæus*, or the Land Crayfishes of Australia.  
 By G. W. SMITH, M.A., Fellow of New College,  
 Oxford, and E. H. J. SCHUSTER, M.A., D.Sc., F.Z.S.,  
 Fellow of New College, Oxford.

[Received August 8, 1912: Read November 26, 1912.]

(Plates XII.—XXV.)\*

## INDEX.

	Pages
Geographical Distribution and Taxonomy .....	112-116
Ethology .....	116-118
Systematic: Five new species of <i>Engæus</i> .....	118-126

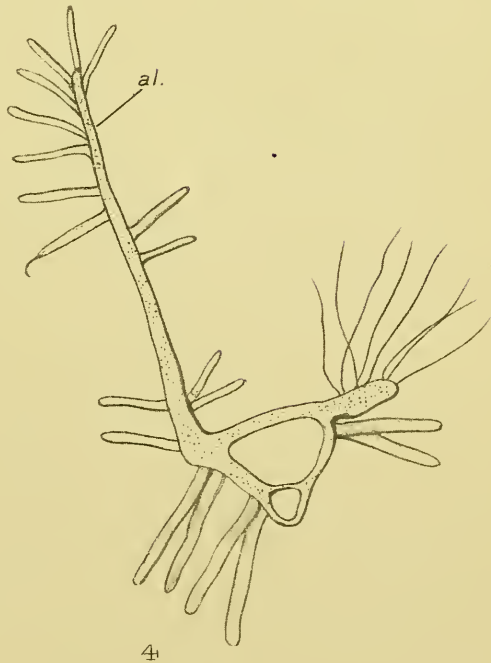
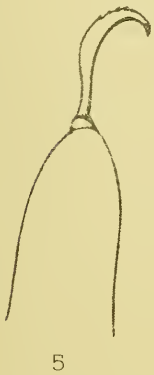
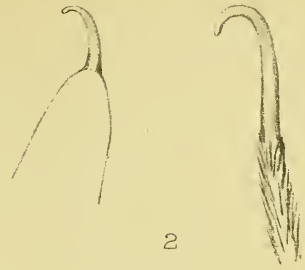
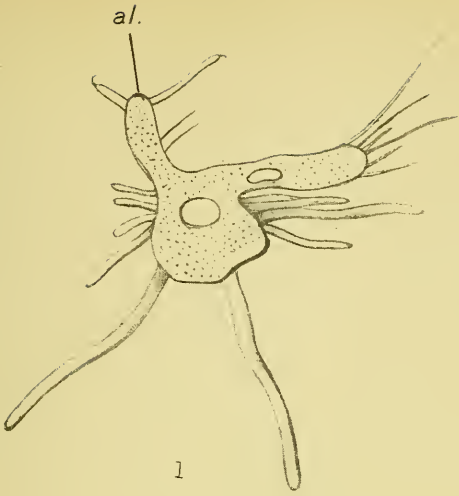
## INTRODUCTION.

The existence of burrowing forms of Australian Crayfish, which live in underground tunnels excavated in damp soil, was first made known by Erichson, who described two species from Tasmania and placed them in a new genus, *Engæus*†. Besides the two Tasmanian species, a very large collection of these burrowing Parastacidæ from Victoria has gradually accumulated in the collection belonging to the Melbourne Museum, chiefly through the activity of Messrs. Kershaw and Fulton, and the present memoir is founded on this large collection and also on specimens which one of us obtained in Tasmania in 1907-8.

Before proceeding to the description and classification of this

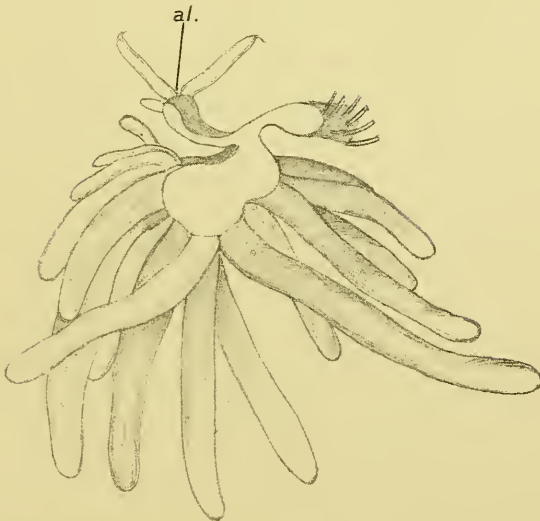
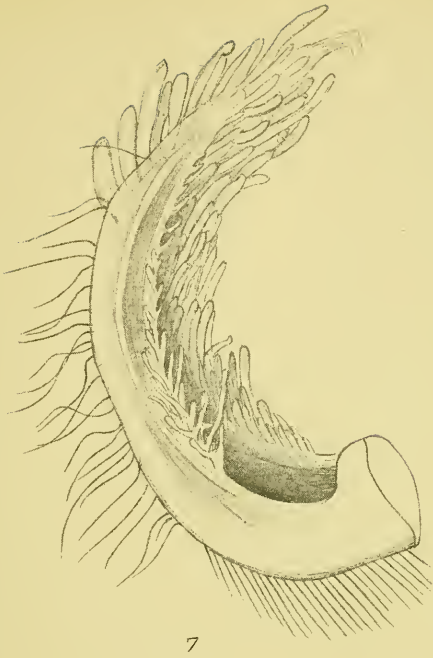
\* For explanation of the Plates see pp. 126, 127.

† Archiv f. Naturg. vol. xii. 1846, p. 102.



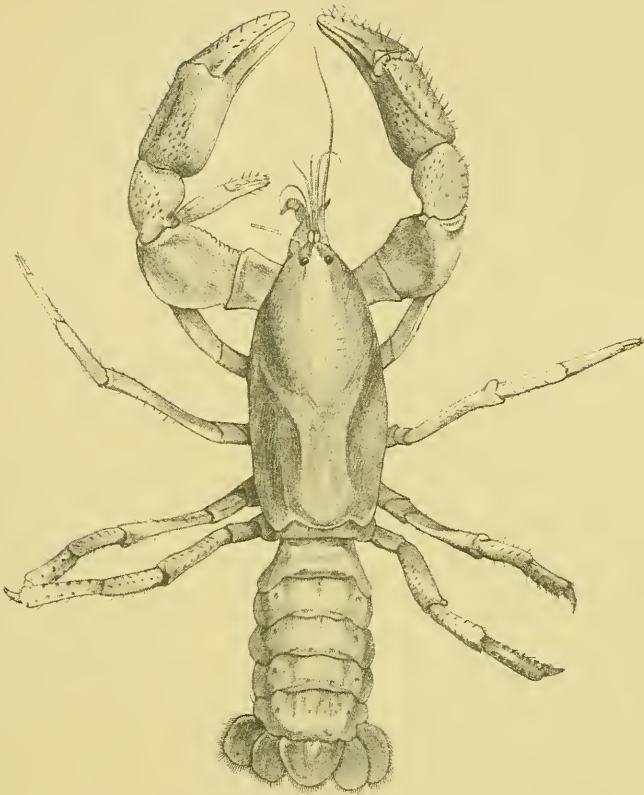
GILLS OF ASTACOPSIS AND PARACHÆRAPES.



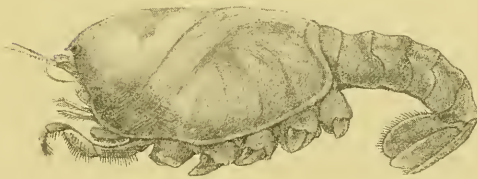


GILLS OF ENGÆUS CUNICULARIUS.





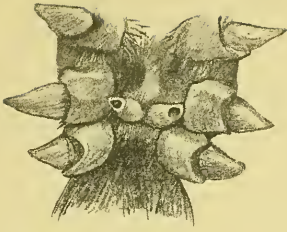
11



12

ENGÆUS FOSSOR.





13



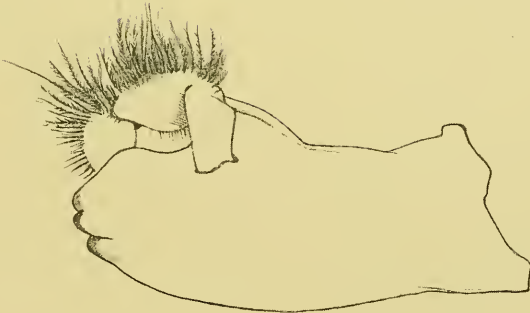
14



15



16



17

Bale & Danielsson, 1913







18



19



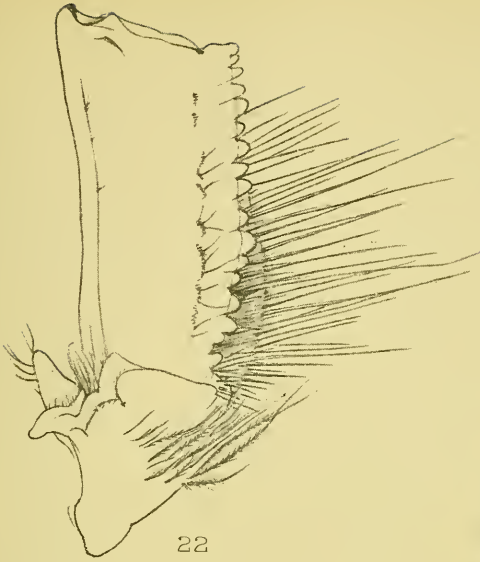
20



21

Bale & Danielsson, L<sup>td</sup>

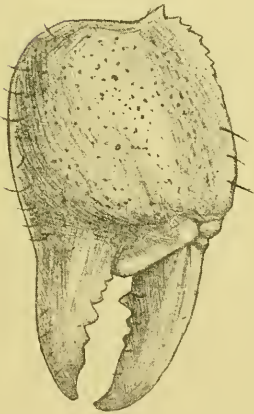




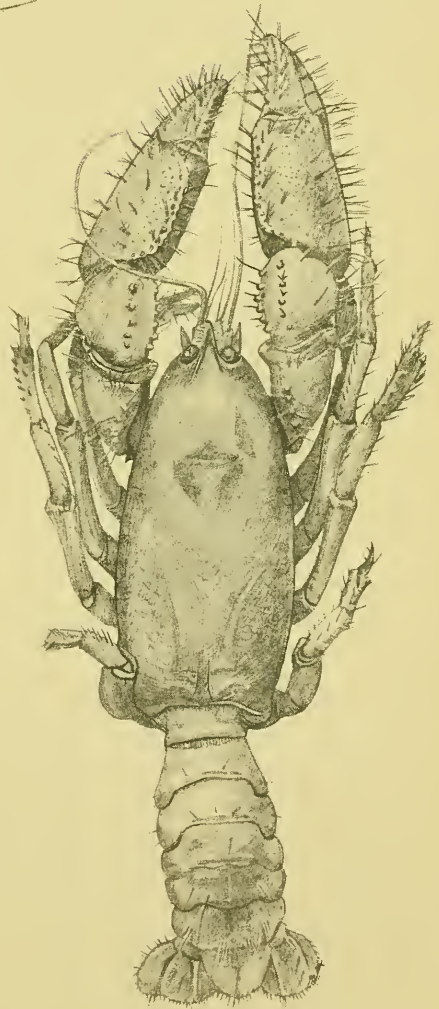
22



25



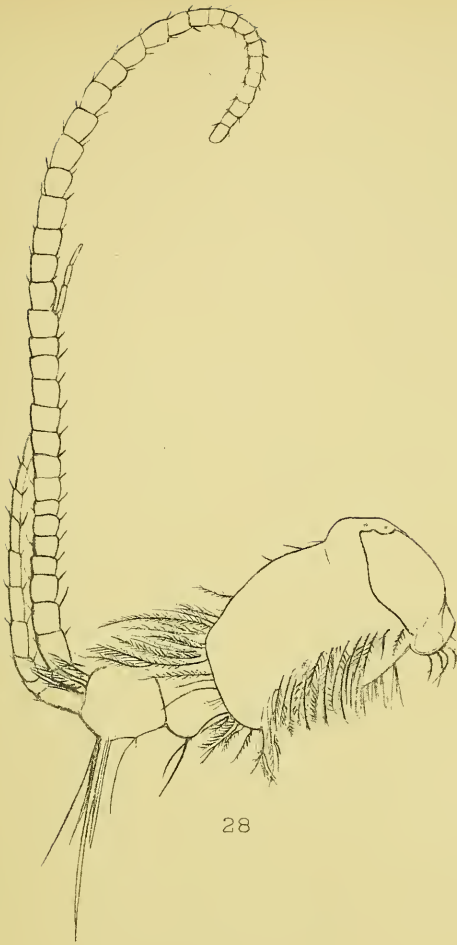
24



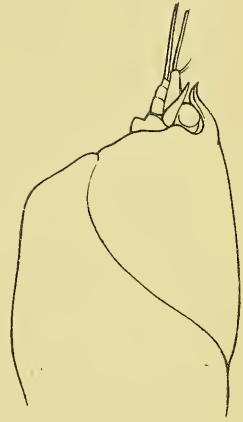
23

Bale & Danielsson, L<sup>td</sup>

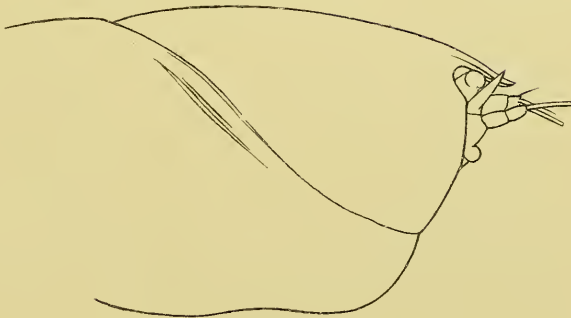




28



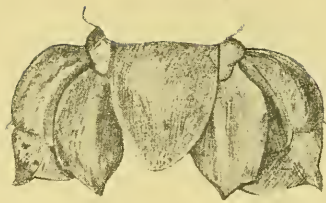
26



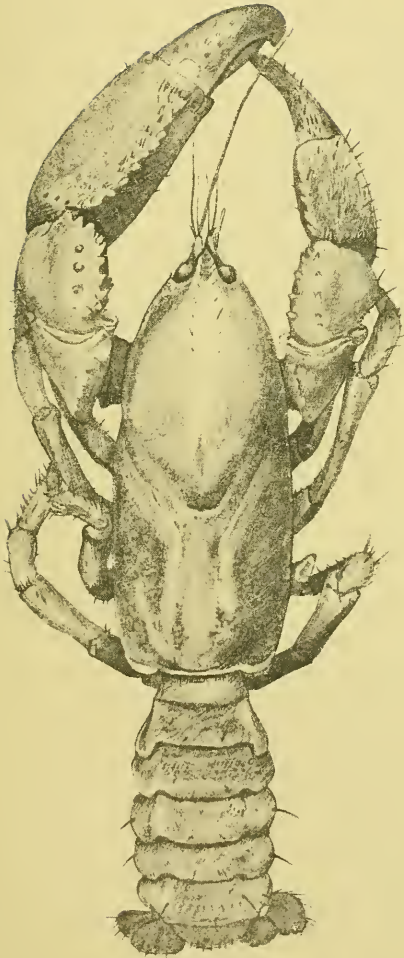
27

Bale & Danielsson, L<sup>td</sup>

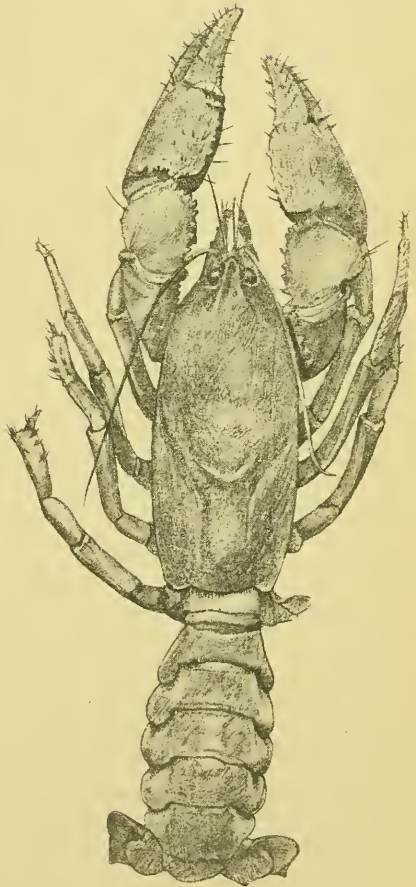




31



29



30

Bale & Danielsson, Ltd.